



The Galleries at Peeler

ANNUAL REPORT 2018-19: A YEAR IN REVIEW



.....

A NOTE FROM THE DIRECTOR [page 2](#)

ABOUT US [page 4](#)

STUDENT ENGAGEMENT [page 5](#)

EXHIBITIONS [page 6](#)

COLLECTIONS [page 8](#)

ADMINISTRATION & FINANCE [page 10](#)

PROGRAM SPONSORSHIPS [page 12](#)

Cover Image: A young girl explores a virtual reality landscape in the lower gallery exhibition *Constructed Landscapes*. The exhibition highlighted over 50 works drawn from the DePauw University permanent art collection and asked visitors to meditate on one particular perspective: is the artistic landscape a true representation of reality, or is it simply a construct—an invention of the artist's mind? Whether intended as memorial, analogy, historical document, or perhaps even a creative exercise, the artist's landscape reminds us that the way we render and translate the world around us is critical to understanding our place in the 21st century.

A NOTE FROM THE DIRECTOR

For many of us in higher education, the 2018-19 academic year was a challenge—especially for liberal arts colleges and universities. Declining enrollments, increasing competition, and rising tuition are reshaping the landscape of our industry as well as our missions. As a result of these pressures, DePauw University restructured its staffing this past spring and eliminated 56 part-time and full-time employees. It is with a heavy heart that I announce the departure of Alexandra Chamberlain '13, Assistant Director and Curator of Exhibitions and Education.

During her tenure (2016-19), Alexandra transformed our outreach programs and professionalized the way in which we deliver services to campus and community. She offered free teacher training to Putnam County K-12 teachers with support from the Indiana Arts Commission, partnered with CastleArts.org to bring hundreds of new children to our galleries, and greatly increased our reach across the DePauw University campus and curriculum. Our program finally seemed to be waking from a decades long slumber—collections and galleries buzzed with tour groups on a *daily* basis at times. Prior to her arrival, perhaps a single visit each *week* would have been a victory for our small staff. Her good work and enthusiasm recalibrated our expectations and delivered on our mission to serve as an interdisciplinary learning lab for our visitors.

These are challenging times, but our professional staff, volunteers, and museum studies students remain committed to our mission as a teaching museum and hands-on learning lab. This summer, DePauw University will send its first traveling exhibition to Lawrence University in Appleton, Wisconsin. *Infinite Splendor, Infinite Light: The Bruce Walker '53 Collection of Tibetan Religious Art* is scheduled to open in September 2019 at the Wriston Art Center. Christie Anderson, Registrar, and Tiffany Miller, Arthur E. Klauser 5th-Year Fellow, along with student volunteers are to be commended for their herculean efforts in packing Tibetan thangkas, silver, and works on paper for the long journey north.

In partnership with DePauw University students, faculty, and staff, we also published our third comprehensive catalog in as many years. *Embracing the Humanities: The Arthur E. Klauser '45 Japanese Art Collection* features essays and label copy by over a dozen DePauw University undergraduates and can be found on our website. Print copies are also available at no cost at the Peeler Art Center.

In closing, I firmly believe that the galleries and collections at DePauw University fulfill a vital role in service of the University's mission to "develop leaders the world needs now." Whether it's a museum studies minor who is acquiring the skills necessary for graduate study, or a business student who will one day serve on a non-profit museum board, we are confident that DePauw students will enter the workforce prepared to serve for the common good. We look forward to continuing this important work in the years ahead.

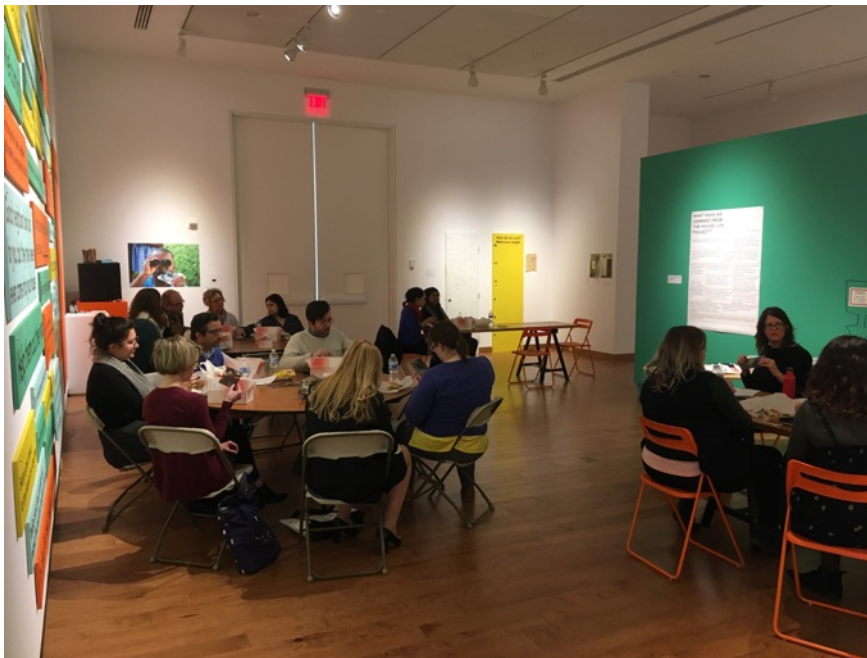
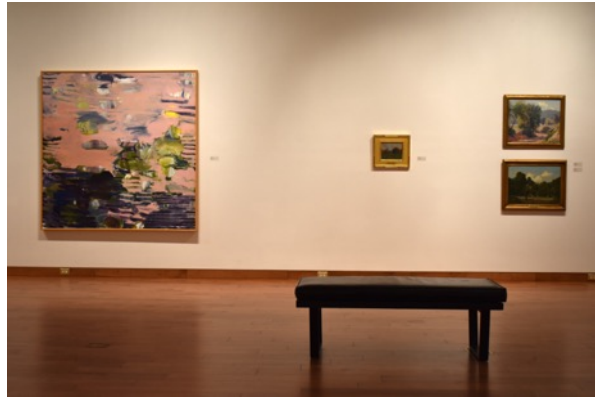
Sincerely,



Craig Hadley
Director/Curator



Clockwise from top left: Visitors build their own LEGO landscapes in *Constructed Landscapes*; Installation photograph from *Constructed Landscapes*; Alexandra Chamberlain leads guests from the Greencastle senior center through *Baggage Claims*; A cyanotype from Casey Robert's solo exhibition; House Life Project Faculty Forum with Meredith Brickell.



MISSION

The educational mission of the galleries and collections at DePauw University is to inspire and engage diverse audiences through our collections, exhibitions and public programming, and to stimulate the spirit of inquiry through a variety of learning styles. As part of an institution of higher learning, we are dedicated to providing educational programming that enhances the cultural life of the immediate community by contributing to the educational enrichment of students, faculty members and the general public.

VISION

The galleries and collections at DePauw University function as an interdisciplinary hub, one in which students and faculty from all disciplines can share and appreciate the value of a liberal arts education and the benefits of visual literacy. These programs will serve our students from all disciplines and all walks of life, and create lifelong learners who appreciate the cultural and intellectual significance of art and object in the 21st century.



Above: Installation photograph from the 2019 Annual Juried Student Art Exhibition.

STUDENT ENGAGEMENT

During the 2018-19 academic year, the gallery program continued in its efforts to build audiences and foster community relationships. This past year through our exhibitions and collections we have been able to reach over 1,700 students and 30 faculty members across campus disciplines. Additionally, we continued in our work with the Castle, partnering with teachers here in Putnam County to help invigorate their curriculum through arts-integration and project-based learning and connected with the Greencastle Middle School Art Club on a semester long project culminating in an exhibition of the students' works in the Peeler lobby. While this is only a short recount of the over 120 tours, talks, and programs hosted this past year, we are proud to say that throughout our efforts to build a broader audience to our spaces, students remained at the core of our endeavors. We very much look forward to continued growth across both campus and community in the years ahead.

-Alexandra Chamberlain '13, Assistant Curator of Exhibitions & Education

OUR YEAR BY THE NUMBERS:

3,058 INTERACTIONS WITH COMMUNITY MEMBERS

1,695 DEPAUW STUDENTS AND 30 FACULTY SERVED

895 COMMUNITY MEMBERS SERVED IN PUBLIC PROGRAMMING

463 K-12 STUDENTS SERVED

OVER 130 PROGRAMS HELD



Above: Assistant Director and Curator, Alexandra Chamberlain speaks to Dr. Pauline Ota's Asian Art Survey class about a few Tibetan drawings and paintings from the collection

EXHIBITIONS
FALL 2018

Clockwise from top left: Jiha Moon *Double Welcome, Most Everyone's Mad Here; Pulled, Pressed, and Screened: Important American Prints; Infinite Splendor, Infinite Light: The Bruce Walker '53 Collection of Tibetan Religious Art*; Ken Gonzales-Day: *Shadowlands*



BAGGAGE CLAIMS >>>

September 1 – December 9, 2019

Richard E. Peeler Art Center
University Gallery, upper level



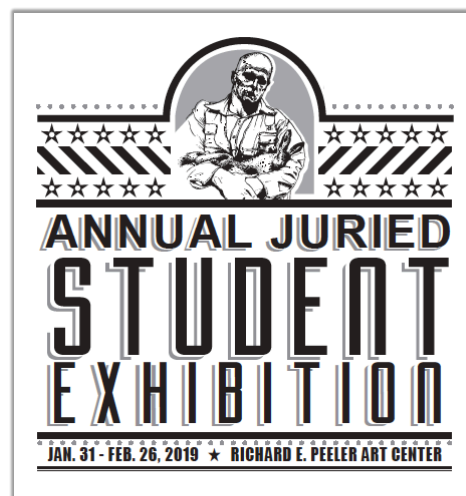
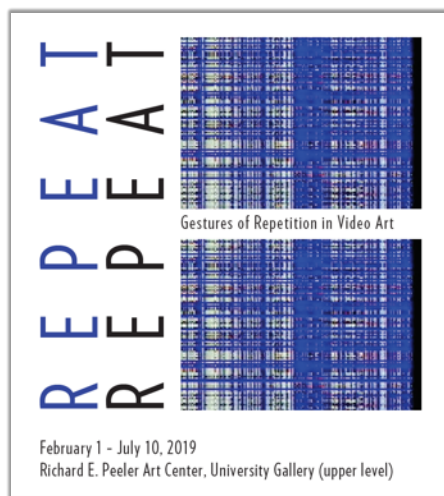
CASEY
ROBERTS



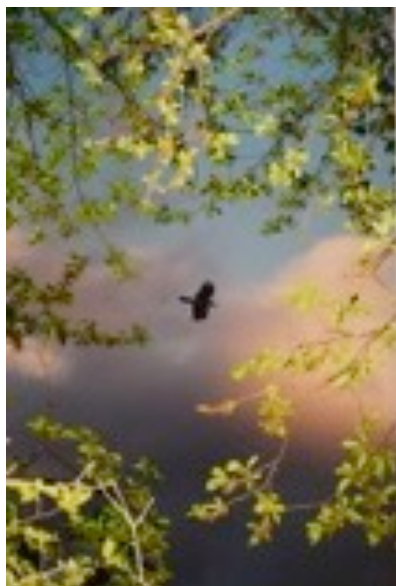
KEITH ALLYN SPENCER

SPRING 2019

Clockwise from top left: *Annual Juried Student Exhibition*; *We're Open, Come In: The House Life Project*; *Constructed Landscapes*; *Senior Art Exhibition*; *Repeat Repeat: Gestures of Repetition in Video Art*



COLLECTIONS
NEW ACQUISITIONS



Yoshinori Mizutani
Yusurika 064, 2014
Photograph
Purchased by DePauw University
Art Gallery from Light Work



Donna Ferrato
JOYA JUSTINA + LESLIE TO THE DIALYSIS
HOSPITAL, 2017
Photograph
Gift of Elisabetta Bartoloni distributed through
Summit Art Advisory
2018.1.1



Christoph Ruckhäberle
oT (untitled), 2018
Print
Purchased by DePauw University Art
Gallery from Thaler Originalgrafik



Joyce Tenneson
Brooke Astor, 2000
Photograph
Gift of Boris Pukin
distributed through
Summit Art Advisory

This past year, the University art collection received over 100 new objects. The new accessions include artists Joyce Tenneson, Donna Ferrato, Yoshinori Mizutani, and Moises Saman. Also, the University's first traveling exhibit—featuring the Tibetan art collection— will travel to Lawrence University in 2019. This exhibit includes 48 works on paper, thangka paintings, religious objects and ephemera, and one film.

Thanks to a National Endowment for the Humanities Preservation Assistance Grant, we were able to purchase additional archival quality painting bins to house our oversized objects including paintings, prints, and drawings. The rehousing work will begin during the summer months of 2019.

- Christie Anderson, Registrar of University Exhibitions and Collections



Collections At-A-Glance:

86 new artworks reviewed by the collections committee

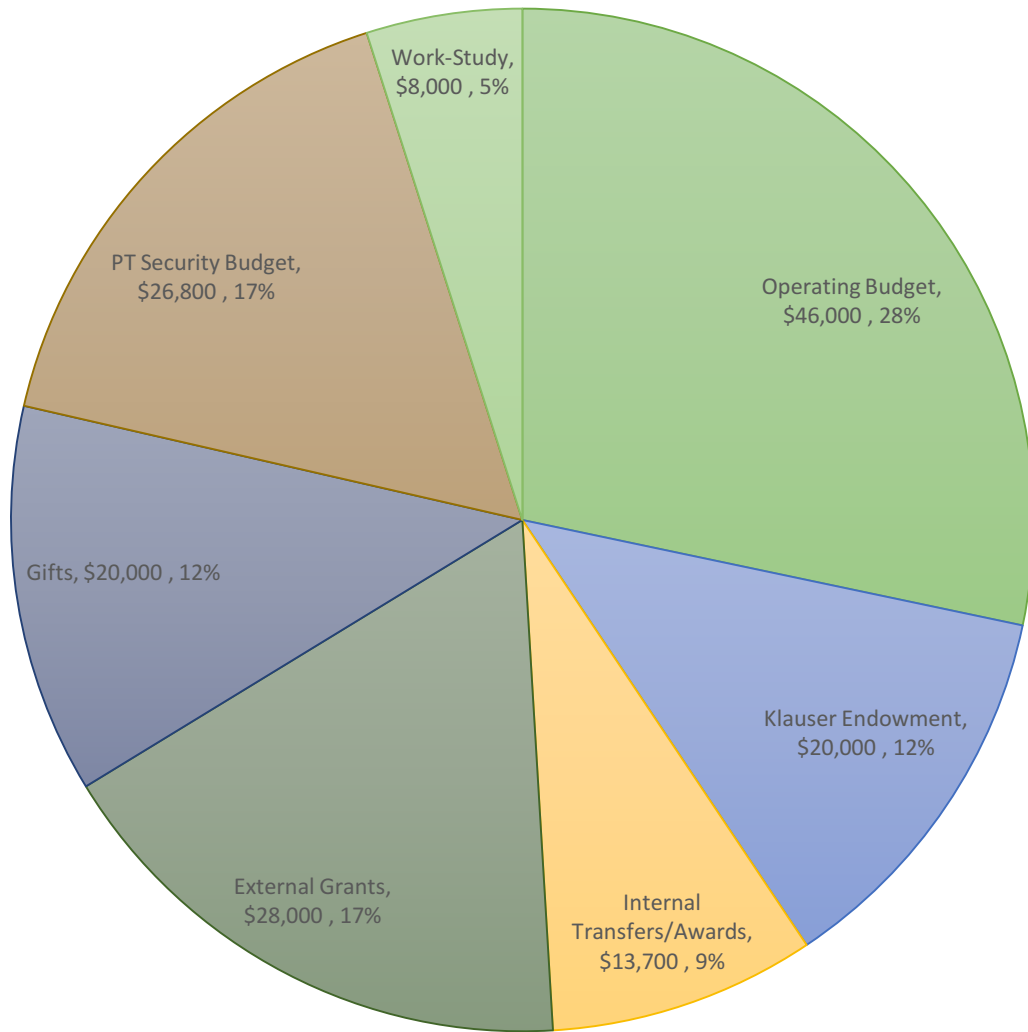
3,418 of 3,682 objects have images in our PastPerfect database for enhanced research and inventory

882 objects accessible online through CONTENTdm

3 volunteers donated 100 hours to collections management

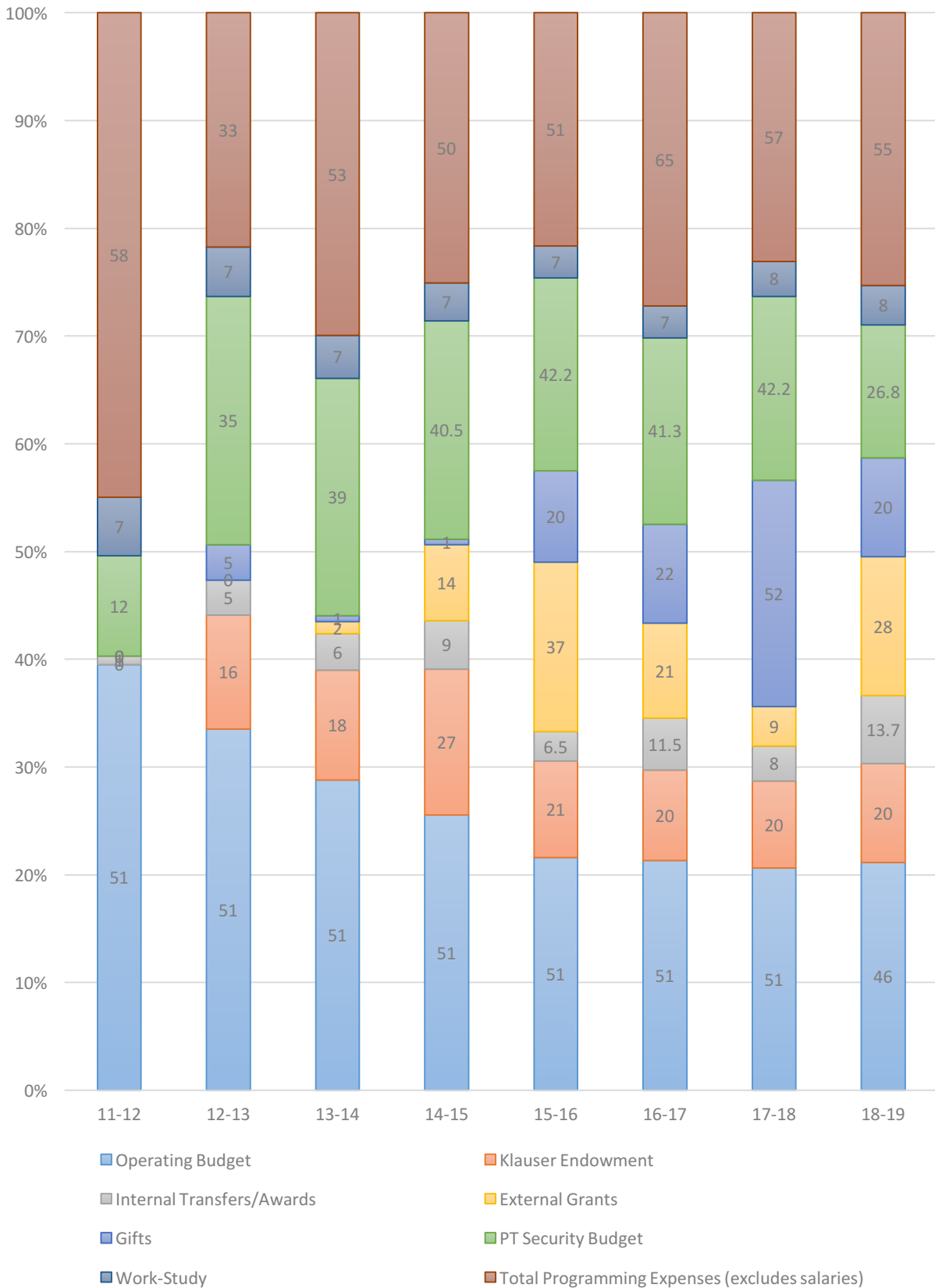
ADMINISTRATION & FINANCE

FY19 Income Sources



Operating Budget	Klauser Endowment	Internal Transfers/Awards
External Grants	Gifts	PT Security Budget
Work-Study		

FY12 - FY19 Income/Expense Galleries & Collections



FY19 Program Sponsors

DePauw University Programs:

- Asian Studies Program
- Office of Academic Affairs
- Peace & Conflict Studies
- Prindle Institute for Ethics
- Public Occasions Committee



E. RHODES AND LEONA B.
CARPENTER FOUNDATION

“The Klauser Fellowship at the Peeler Galleries has provided me with the necessary skills for work in almost any museum. I had the opportunity to utilize my art historical studies through in-depth analysis and writing descriptions in the database, as well as my museum studies skills with how to think critically about exhibits and museums. Furthermore, I received first-hand experiences handling and moving art, and helping condition report, clean, number, and polish objects, as well as soft-pack them for DePauw's first traveling exhibit titled *Infinite Splendor, Infinite Light: The Bruce Walker '53 Collection of Tibetan Religious Art*. The work I have done and things I have learned will be indispensable to my graduate studies in Museum Studies and Art History, and also to my future career as a collections manager or registrar in a museum.”

-Tiffany Miller '18



Peeler Art Center
10 W Hanna St.
Greencastle, IN 46135
(765) 658-4336
galleries@depauw.edu